



### The Newfoundland & Labrador Provincial Perinatal Program

- ◆ Aims to improve the health of mothers and babies.
- ◆ Provides education to health care providers and the public.
- ◆ Provides a special follow-up clinic to monitor the growth and development of infants and small children.



## An Information Guide About You and Your Baby and the Provincial Perinatal Database

Questions or Comments?  
Please contact us!

Newfoundland and Labrador Provincial  
Perinatal Program  
The Janeway Children's Health and  
Rehabilitation Centre  
Health Sciences Centre  
St. John's, NL  
Canada A1B 3V6

Phone: 777-4657  
Fax: 777-4125  
Email: [Lorraine.Burrage@hccsj.nl.ca](mailto:Lorraine.Burrage@hccsj.nl.ca)



*Newfoundland and Labrador*  
**Provincial  
Perinatal Program**

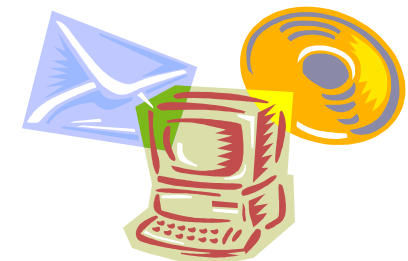


*Newfoundland and Labrador*  
**Provincial  
Perinatal Program**

## You and Your Baby



**An Information Guide  
About  
You and Your Baby  
and the Provincial Perinatal  
Database**





The Provincial Perinatal Program collects health information on moms and babies in Newfoundland and Labrador.

### Why is this information collected?

- ◆ To monitor the health and outcome of pregnant women and their babies.
- ◆ To plan and develop programs and services that will help improve the health of moms and babies.
- ◆ To provide education on practices that will improve the health of moms and babies.

**The information that we use in reports contains nothing that will identify you or your baby.**

### What information is collected?

- ◆ Life style behaviors like smoking, alcohol use and folic acid supplementation.
- ◆ Access to prenatal education and support.
- ◆ Height and weight.
- ◆ Pregnancy, labour and delivery information.
- ◆ Newborn information such as birth weight, whether full term or preterm, health at birth and discharge, and type of infant feeding.

### Who collects the information?

- ◆ Health care providers such as doctors and nurses.



### Where is the information collected from?

- ◆ From both you and your baby's hospital medical and nursing record.
- ◆ From the prenatal record which is filled out by your health care provider at each prenatal visit.

### When is the information collected?

- ◆ During your pregnancy and while you and your baby are in hospital.

### Where is the information stored?

- ◆ On a password protected computer, in a secure computer system.

### Who sees the information?

- ◆ Only a small number of people who work with this information, such as data coders and analysts.

### Are there rules about keeping information safe and private?

- ◆ There are very strict government rules about access to personal information.
- ◆ Everyone who works with the Integrated Regional Health Authorities and the Provincial Perinatal Program sign an oath to keep all personal information private and confidential.

